

REQUEST FOR INFORMATION

Custom artwork for new offices

Purpose

The Bush Foundation is seeking Bush Fellow artists to develop custom artwork for our new offices in The 428 Building in downtown St. Paul, MN. This opportunity is open to current or past Bush Fellows.

Background

We are [moving our offices](#) to the fourth floor of The 428 Building in the fall of 2025. Through the years, we have acquired or commissioned various pieces of art and will be taking all that is movable with us to display in the new space. We also have some additional spaces and surfaces that can accommodate new artwork to represent the creativity, personality and vibrancy of our grantmaking region.

About us

The Bush Foundation works to inspire and support creative problem solving — within and across sectors — to make our region better for everyone. To do this, we invest in great ideas and the people who power them in Minnesota, North Dakota, South Dakota and the 23 Native nations that share the same geography. Learn more at bushfoundation.org.

Potential scope of work and approach

We are seeking Bush Fellow artists who can take their style, vision and artistry, and align it with the Bush brand, purpose, operating values and other design elements in the space.

We expect to work with the artist on concepts and revisions to get to the final designed artwork. Types of art we are seeking:

- **Custom graphics for “Archie” conference room glass:** Our largest conference room has lots of glass that can benefit from some privacy film or other material that can be custom designed to complement the rooms and other adjacent spaces.
- **Custom graphics for “Edyth” conference room glass and interior walls:** Our other large conference room has a wall of glass and two interior walls that could accommodate some custom graphics, a mural or custom wallpaper.

This work can be the vision of a single artist or of two different artists, depending on the responses we receive. *Please see the end of this document for specific dimensions and images of these spaces.*

We envision this as a collaborative and somewhat iterative process. We have a small working committee of Bush staff members who are leading the overall art and branding vision for our new offices.

How to submit your information

We are curious to learn about your artwork and the mediums you have experience in; your approach and style; and anything else that you feel is helpful for us to know based on this RFI.

If you have some examples of your work that are available online or in some other format that is easy for you to share with us, we would love to see them.

Also, if you have worked on similar projects before—including having worked with us before—we would love to know some of that as well.

We also would like to know how you are usually paid for this type of commissioned work and at what rate.

We expect to select one or two artists through this process. If you are not selected for this project, we will consider your work if other opportunities arise.

If you have questions or would like to be considered for this project, please email your information to Kari Ruth, communications director, at kruth@bushfoundation.org.

We will be accepting inquiries and information until Wednesday, April 30, 2025.

Timing

We will review information as it comes in with **plans to select an artist or artists to partner with no later than May 15, 2025**. We recommend that you share your interest and information as soon as possible.

We are planning to move into our new offices in late summer of 2025. There is some flexibility with this project if needed, as installation can happen after our staff moves into the space.

We hope to start working on concepts as soon as possible after May 15 with final designs ready by July 15, if possible.

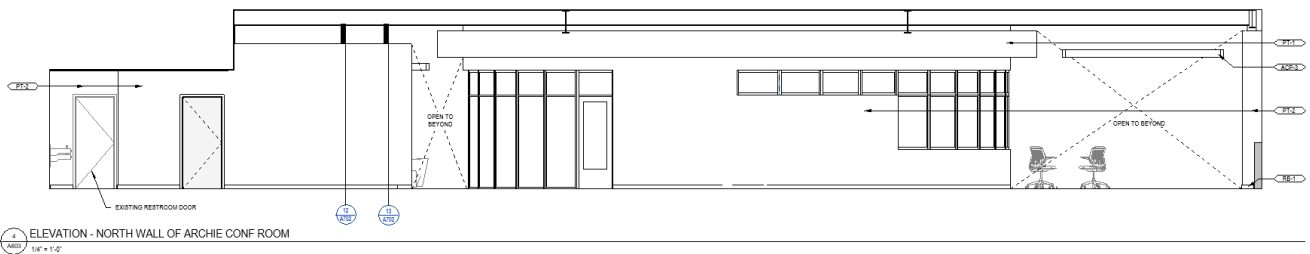
See the following pages for specific dimensions and images of the spaces.

Project dimensions and images: ARCHIE conference room

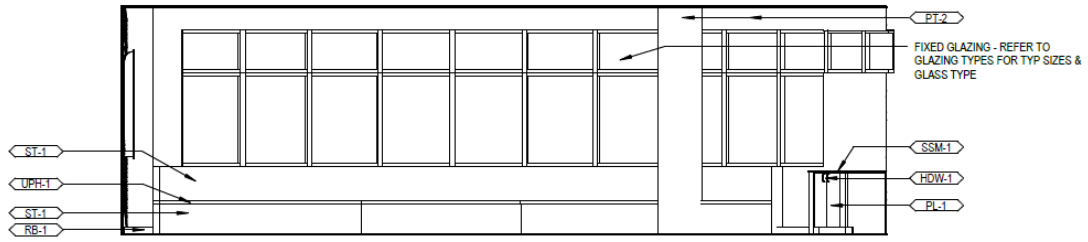
Our largest conference room has lots of glass that can benefit from some privacy film or other material that can be custom designed to complement the rooms and other adjacent spaces.

Archie artwork dimensions:

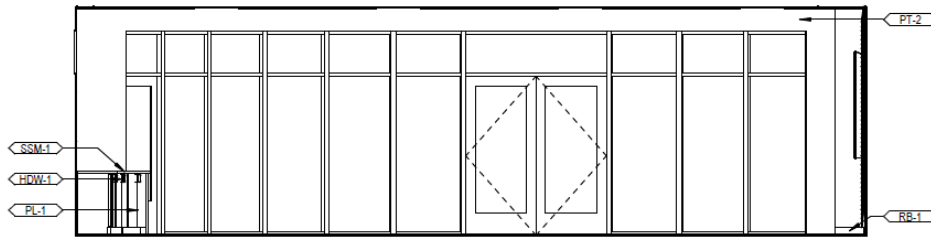
- Roughly 430 SF glazing, in 44 individual pieces ranging from 5-20 SF (refer to elevations for glass sizes)
- 155 SF gyp board wall surface (north side) between glazing segments could be included in total artwork area



ELEVATION - NORTH WALL OF ARCHIE CONF ROOM
1/4" = 1'-0"



5 ELEVATION - ARCHIE CONF ROOM - WEST WALL
 A803 1/4" = 1'-0"



6 ELEVATION - ARCHIE CONF ROOM - EAST WALL
 A803 1/4" = 1'-0"

Project dimensions and images: EDYTH conference room

Our other large conference room has a wall of glass and two interior walls that could accommodate some custom graphics, a mural or custom wallpaper.

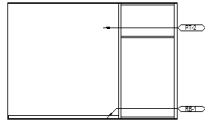
Edyth artwork dimensions:

- Roughly 218 SF glazing, in 12 segments (refer to elevations for glass sizes)
- East wall: Roughly 198 SF (10'H x 19' 10W)—gyp board wall surface
- South wall: Roughly 70 SF (10'H x 7'W)—gyp board wall surface

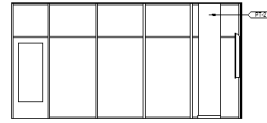




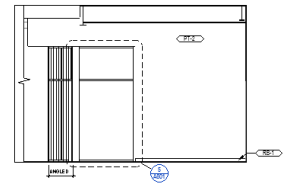
ELEVATION - EDYTH CONF ROOM - EAST WALL
1/4" = 1'-0"



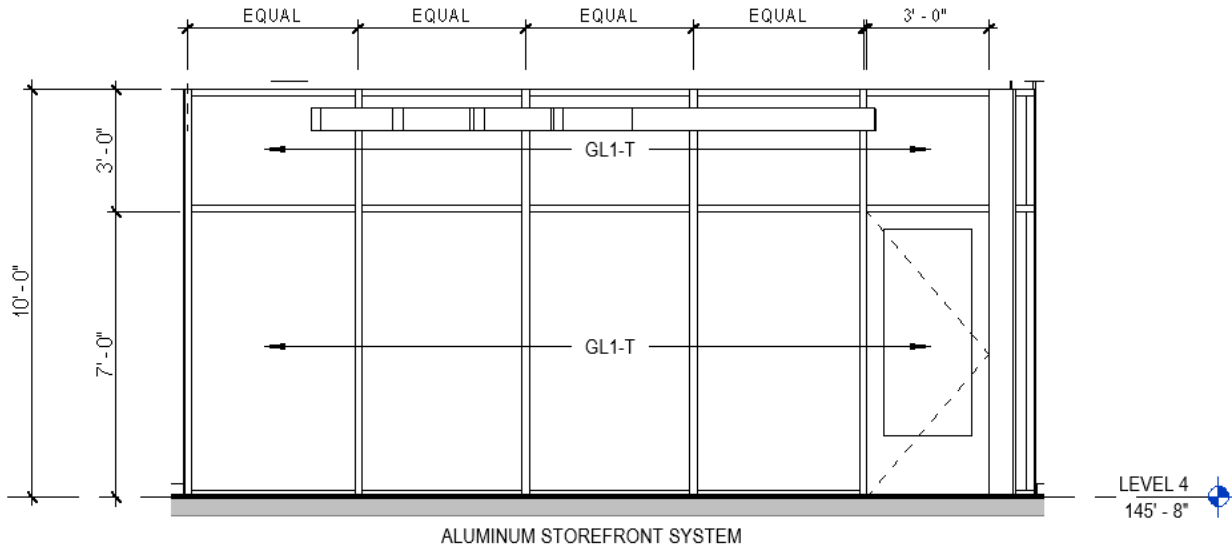
ELEVATION - EDYTH CONF ROOM - SOUTH WALL
1/4" = 1'-0"



ELEVATION - EDYTH CONF ROOM - WEST WALL
1/4" = 1'-0"



ELEVATION - EDYTH CONF ROOM - EXTERIOR SOUTH WALL
1/4" = 1'-0"



4
A801 EDYTH CONF ROOM - WEST WALL
1/4" = 1'-0"