



REQUEST FOR PROPOSALS

Custom tile work or mosaics for new offices

Purpose

The Bush Foundation is seeking a Bush Fellow artist to develop custom tile work or mosaics for our new offices in The 428 Building in downtown St. Paul, MN. This opportunity is open to current or past Bush Fellows.

Background

We are [moving our offices](#) to the fourth floor of The 428 Building in the late summer of 2025. Through the years, we have acquired or commissioned various pieces of art and will be bringing all that is movable with us to display in the new space. We also have some additional spaces and surfaces that can accommodate new artwork to represent the creativity, personality and vibrancy of our grantmaking region.

About us

The Bush Foundation works to inspire and support creative problem solving — within and across sectors — to make our region better for everyone. To do this, we invest in great ideas and the people who power them in Minnesota, North Dakota, South Dakota and the 23 Native nations that share the same geography. Learn more at bushfoundation.org.

Potential scope of work and approach

We are seeking Bush Fellow artists who can take their style, vision and artistry, and align it with the Bush brand, purpose, operating values and other design elements in the space.

We expect to work closely with the artist on concepts and revisions to get to the final design. This includes a small core group of Bush staff leading artwork decisions for the new space.

We are seeking an artist to partner on:

Tile or mosaic artwork for select kitchen walls: This is a high-traffic, highly visible gathering space. We will need to use tiles or similar materials that are durable for a kitchen area. Beyond that, we are flexible on the choices and design. We expect to install this artwork on some cabinet walls, a narrow backsplash and a countertop island. We are looking for a geometric or abstract design that complements the colors in the space and our Bush colors.

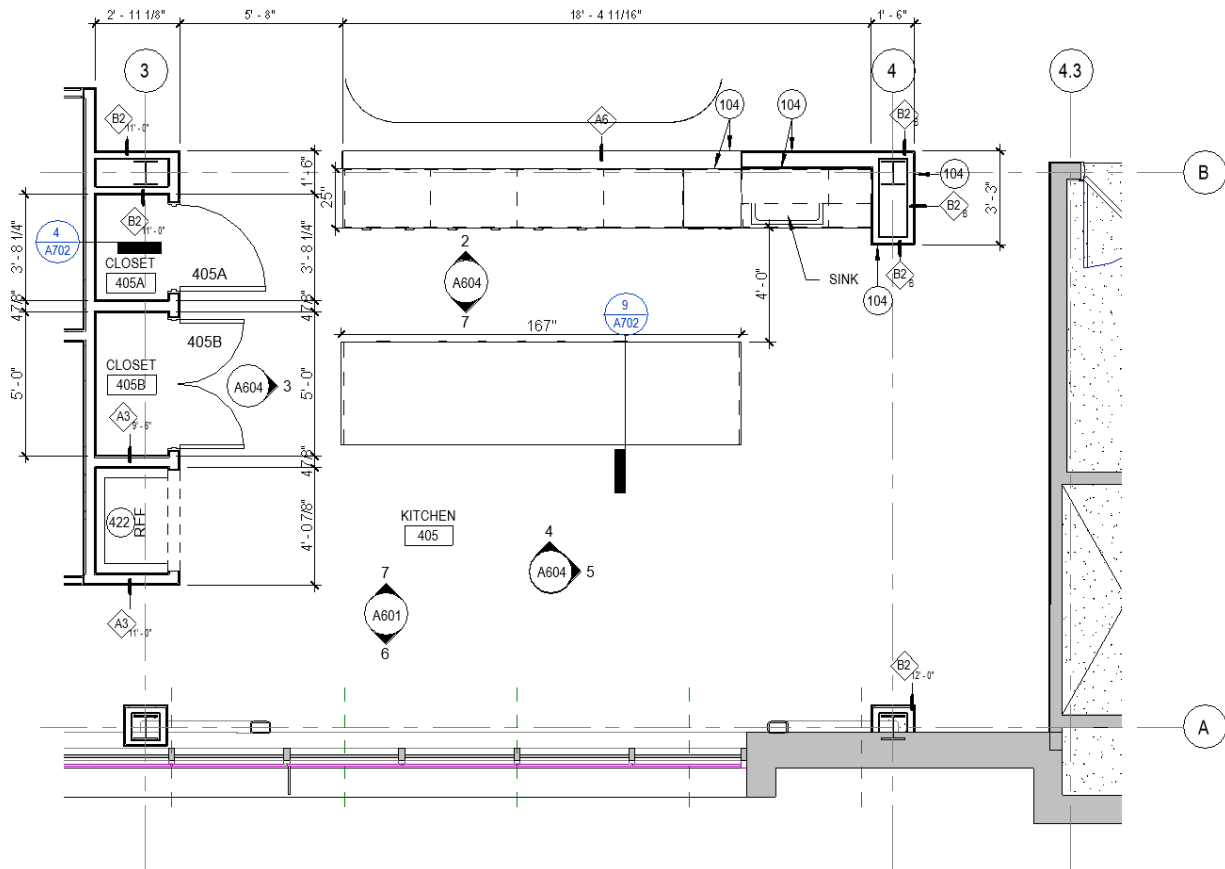
Please refer to the last page of this RFP for rough dimensions and images of the space that show where the art would be placed. The renderings are illustrative only.

Project dimensions and images

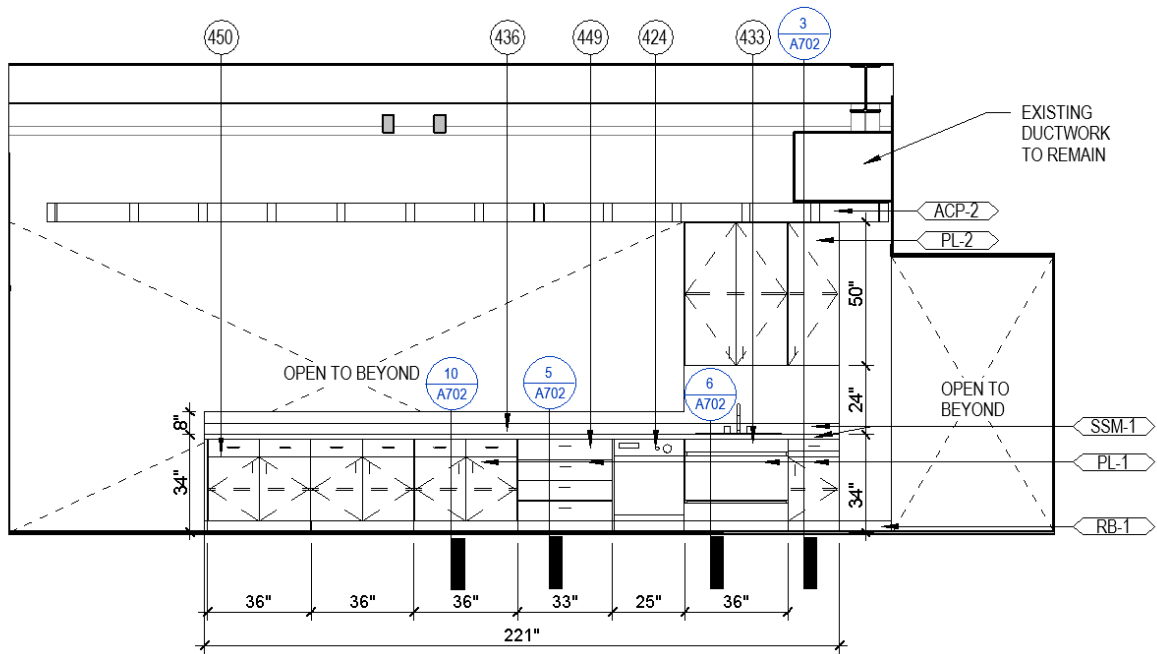
Approximate dimensions: Roughly 157 SF.

Please refer to the renderings and elevations for the wall shape. Also note that all walls will be finished with cement board, and painted, ready for tile installation.





6 LEVEL 4 - ENLARGED PLAN OF KITCHEN
 A604 1/4" = 1'-0"



2 ELEVATION - NORTH WALL OF KITCHEN
 A604 1/4" = 1'-0"

How to submit your information

We are curious to learn about your experience working with tile; your approach and style; and anything else that you feel is helpful for us to know based on this RFI.

If you have some examples of your work that are available online or in some other format that is easy for you to share with us, we would love to see them.

Given the dimensions of the project, what is your estimate for how much you would charge to design and install the artwork?

If you have questions or would like to be considered for this project, please email your information to Kari Ruth, communications director, at kruth@bushfoundation.org.

We will be accepting inquiries and information until Wednesday, April 30, 2025.

Timing

We will review information as it comes in with **plans to select an artist or artists to partner with no later than May 15, 2025**. We recommend that you share your interest and information as soon as possible.

We are planning to move into our new offices in late summer 2025.

We would like to have the artwork installed when we move in, but we recognize that buildouts don't always go as planned. We will work with the partner artist and our construction team to get to a timeline that works as well as possible for all.